

# Easy e-Bank Rec Initial Install Instructions

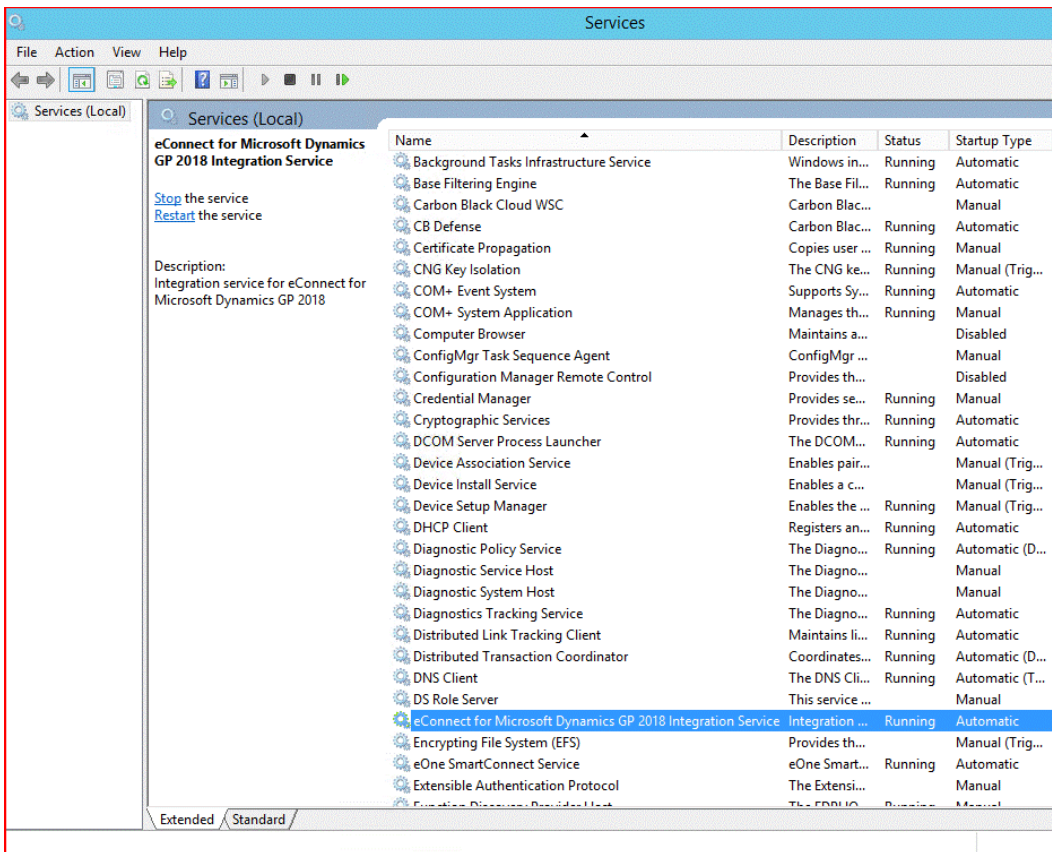
## Initial Installation of Easy e-Bank Rec

**NOTE:** Please gather and have on-hand the following information for a successful install:

- SQL Server Name
- System Administrator (SA) Password
- Dynamics Database (DB) Name

**NOTE:** We no longer use registration keys; they are not needed for the installation.

**NOTE:** The eConnect service must be running for Easy e-Bank Rec to post into GP but is not necessary for the installation. You can verify if the eConnect service is running under services on your workstation.



*eConnect for Microsoft Dynamics GP 2018 Integration Service*

The information below is for an **INITIAL INSTALL ONLY**. **THIS INSTALLATION WILL ERASE ALL PRIOR DATA AND SETUP.**

This installation executable can be used to install additional workstation clients.

**ATTENTION: If you wish to Upgrade Easy e-Bank Rec, it requires a different executable. Please contact support@gpcsystems.com for details.**

## Before beginning the installation process:

1. It is recommended that all users are logged out of Dynamics GP when performing an upgrade. Our application is installed in the Add-ins directory in GP and although it is preferred it is not required.
2. Please be sure to have a good backup of the SQL server databases and the Microsoft Dynamics GP installation directory. This is a precautionary step to ensure quick restoration in the event the upgrade must be rolled back.

## The installation process:

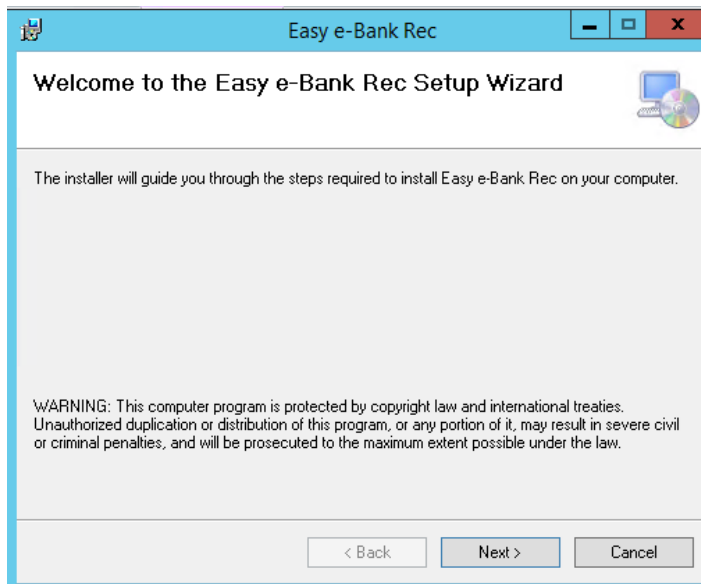
3. Download the desired Initial Install version of Easy e-Bank Rec from our website <https://easybankrec.com> > Software Downloads > desired version (i.e., Initial Install Version 2018 > 18.x.xxxx).

**NOTE:** You must unblock the download before installing by right-clicking on the download.

4. Launch the version to be installed (from the Downloads folder).

The installation setup wizard will appear on the screen.

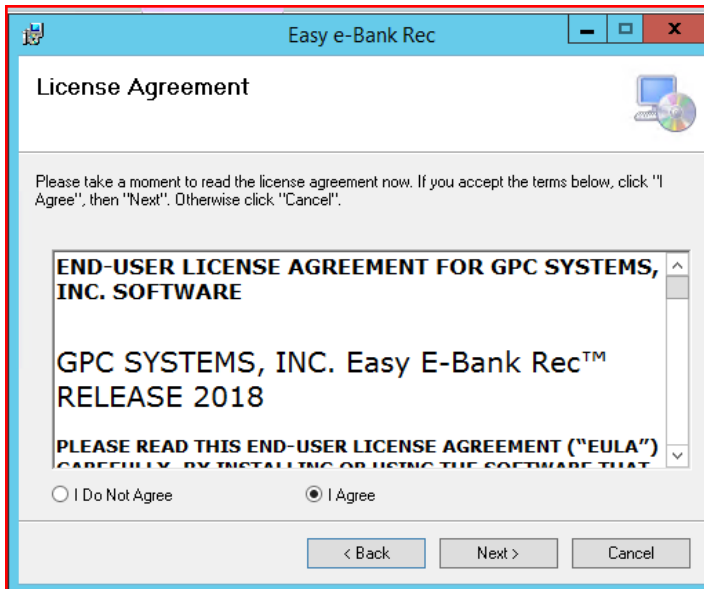
Follow the on-screen instructions to complete the install.



*Setup Welcome Screen*

Click on "Next".

5. The License Agreement window appears.

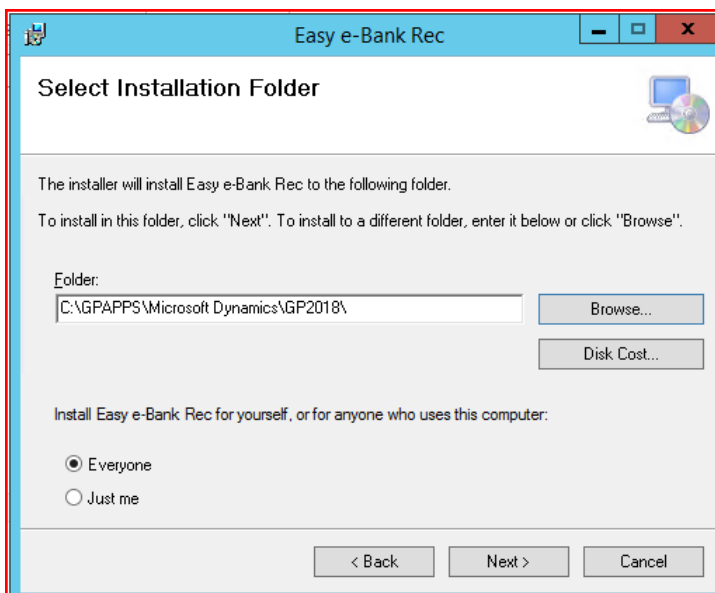


*License Agreement Screen*

Click on "I Agree", then "Next".

**NOTE:** The end-user license agreement contains the terms and conditions for the use of Easy e-Bank Rec. Using the Easy e-Bank Rec product will constitute acceptance of the License Agreement.

6. In the Select Installation Folder window, make sure the install folder is the Main GP Directory. If the Main GP Directory does not appear in the folder path, make sure to enter it. A typical path in version GP2018 is: ProgramFiles > MicrosoftDynamics > GP.

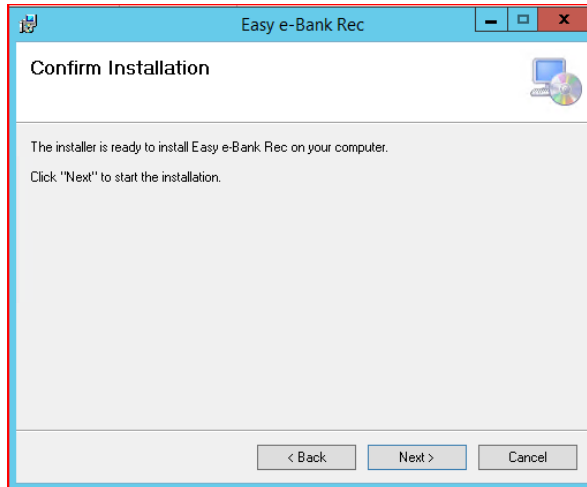


*Setup Installation Folder*

If multiple users are on an installation computer, select "Everyone" (recommended).

Click "Next".

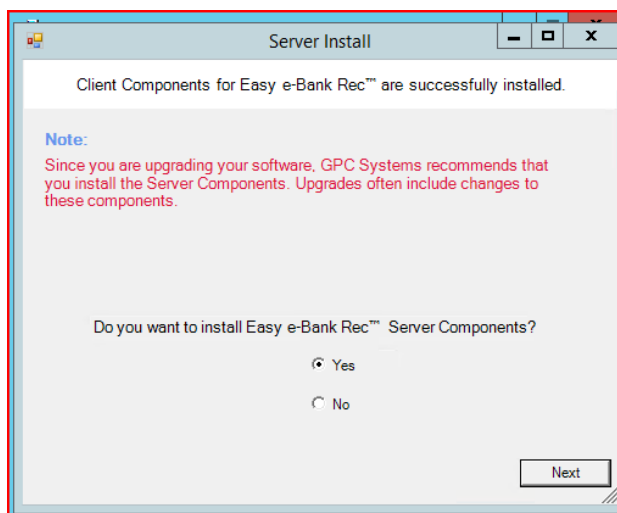
7. In the Confirm Installation window, click "Next" to start the installation.



*Confirm Installation Window*

This completes the installation of the client for Dynamics GP.

8. Server Components should be installed by following the prompts in the next window. This is a one-time only installation of the stored procedures and tables on the SQL server hosting the Dynamics GP database(s).



*Setup Server Install*

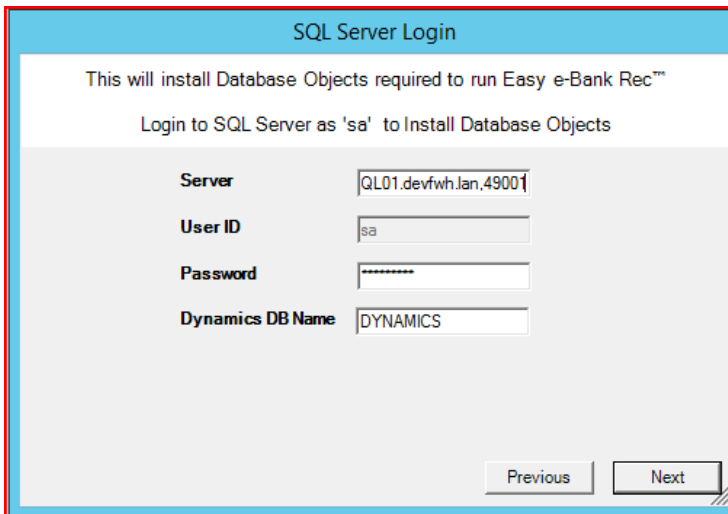
Select "Yes", then "Next" to install the components on the SQL server.

**NOTE:** If the server installation has already been done select "No" and skip steps 9 & 10. Selecting "No" is typically done if the client install is needed on other workstations, but the server install has already been done once, at a prior installation of the client, per the instructions above.

**NOTE:** For future workstation installations, be sure to select the "No" default option once the Easy e-Bank Rec components have been installed on the server.

9. In the SQL Server Login window, identify the SQL Server to be used for the Easy e-Bank Rec installation. Enter the SQL Server instance in "Server", enter "sa" (System Administrator) for the "User ID" and the System Administrator password in the "Password" field. Also needed is the Dynamics Database name.

**NOTE:** New feature in Version 2018 or above, the server supports non-standard IP ports on the SQL installation. The SQL name can be followed by a comma and the port used in the SQL installation (i.e., SQLservername,49001).



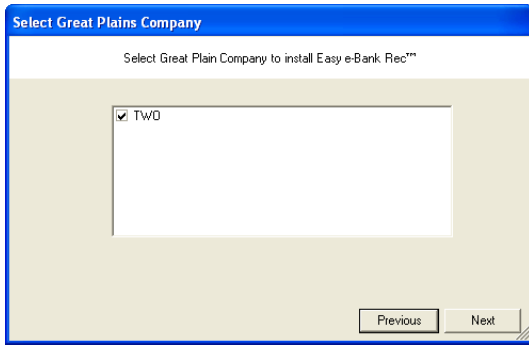
*SQL Server Login*

This process installs all the tables for Easy e-Bank Rec in each Dynamics GP company that you will designate in step 10.

**NOTE:** If upgrading/performing a client installation only, proceed to step 11.

10. In the Select Microsoft Dynamics GP Company window, select the appropriate Microsoft Dynamics GP company, or companies (for the Easy e-Bank Rec installation), then click "Next".

**NOTE:** If you are installing the Easy e-Bank Rec Trial Version, only the TWO company will appear in this window.

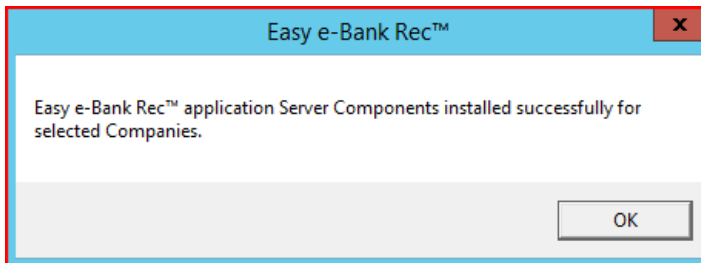


*Setup Selected GP Company*

Click "Next."

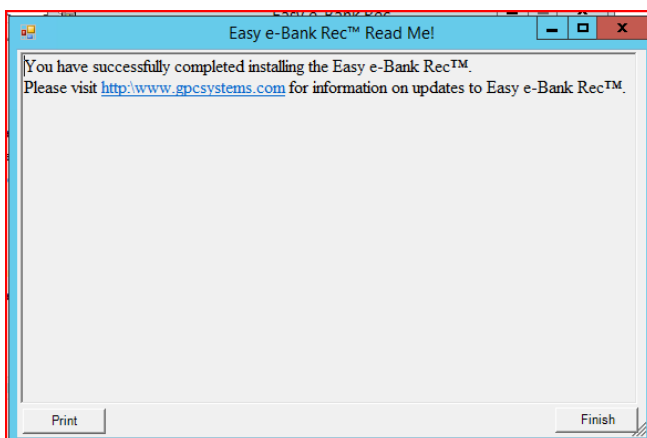
**NOTE:** It may take several minutes to install the server components, depending on the number of companies you have selected.

After the application has been installed, you will receive a confirmation.



Click "OK."

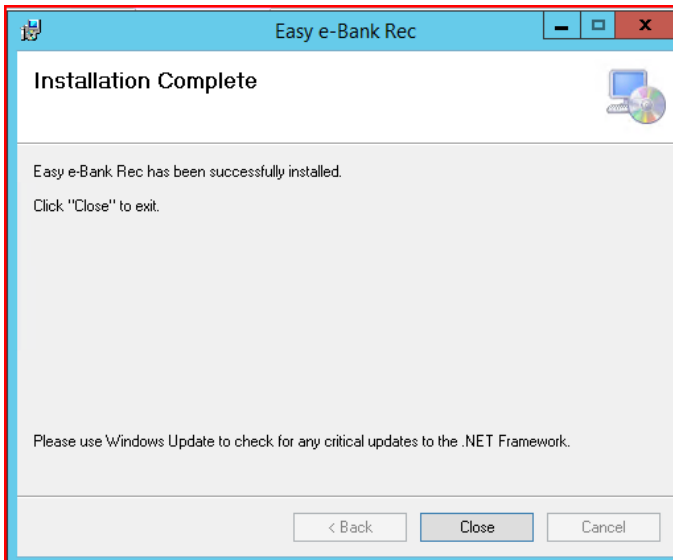
11. If the Easy e-Bank Rec Trial Version has been installed, the following Read Me! window will appear on the screen.



*Setup Read Me!*

Click "Finish" to complete the installation.

The installation will finish, and you will receive confirmation if the setup was successful.

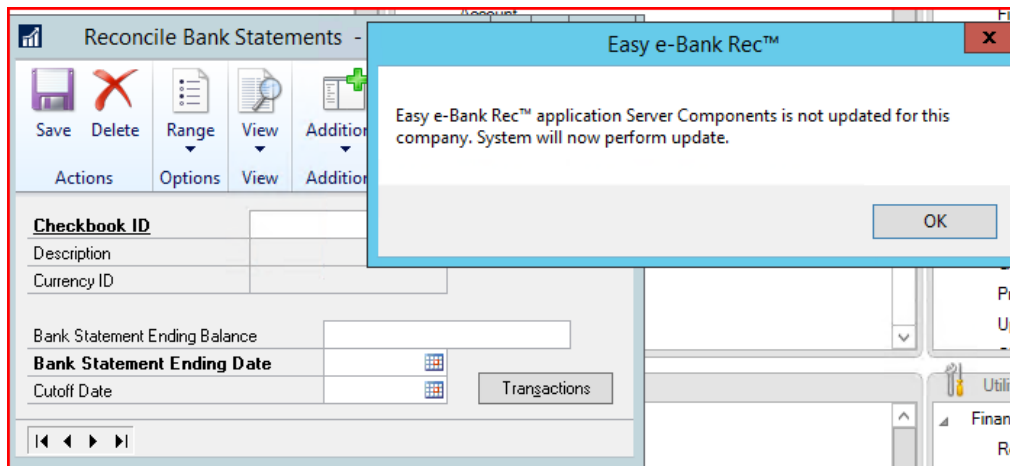


Click "Close."

**ATTENTION:** For Easy e-Bank Rec to post to the accounting system, ensure the company corporate address record is entered properly: **Tools > Setup > Company**. Company Address and Address-ID need to be present.

12. Log into Microsoft Dynamics GP and open Easy e-Bank Rec under Transactions > Financial > Reconcile Bank Statement. Select Additional > Easy e-Bank Rec.

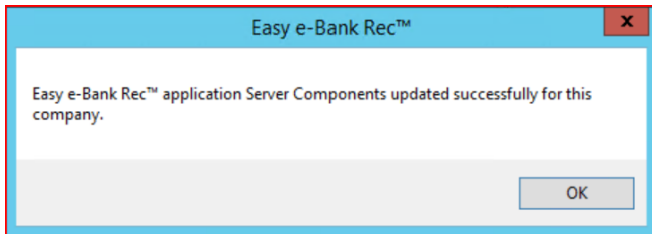
A prompt to update the server components (with our registration key database) will appear. The system will verify the registration keys automatically.



*Easy e-Bank Rec Open / System Update*

Click "OK."

Upon completion of a successful update, the following message will appear.

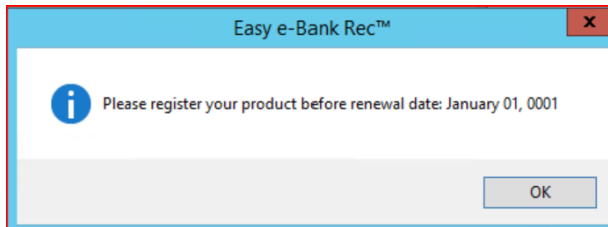


*Server Components Updated Successfully*

Click "OK."

13. Open Easy e-Bank Rec under Transactions > Financial > Reconcile Bank Statement. Select Additional > Easy e-Bank Rec.

**NOTE:** If the following message appears, it means we're unable to validate your site name in our registration key database.

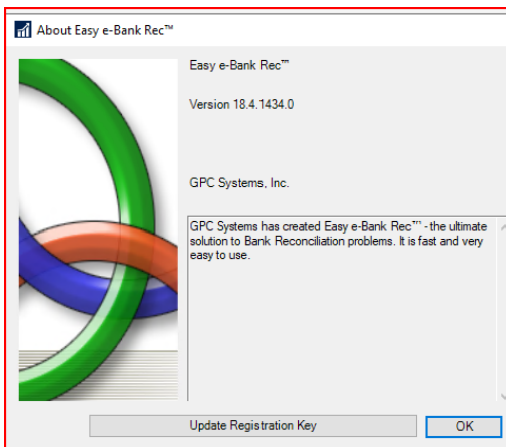


*Validate GP Registered Site Name*

Click "OK."

The Easy e-Bank Rec screen will display a **red warning** message and the actions menu will be greyed out.

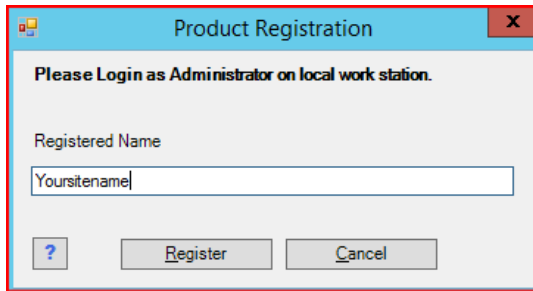
If that is the case: Go to About >



*About Easy e-Bank Rec*



Click “Update Registration Key.”



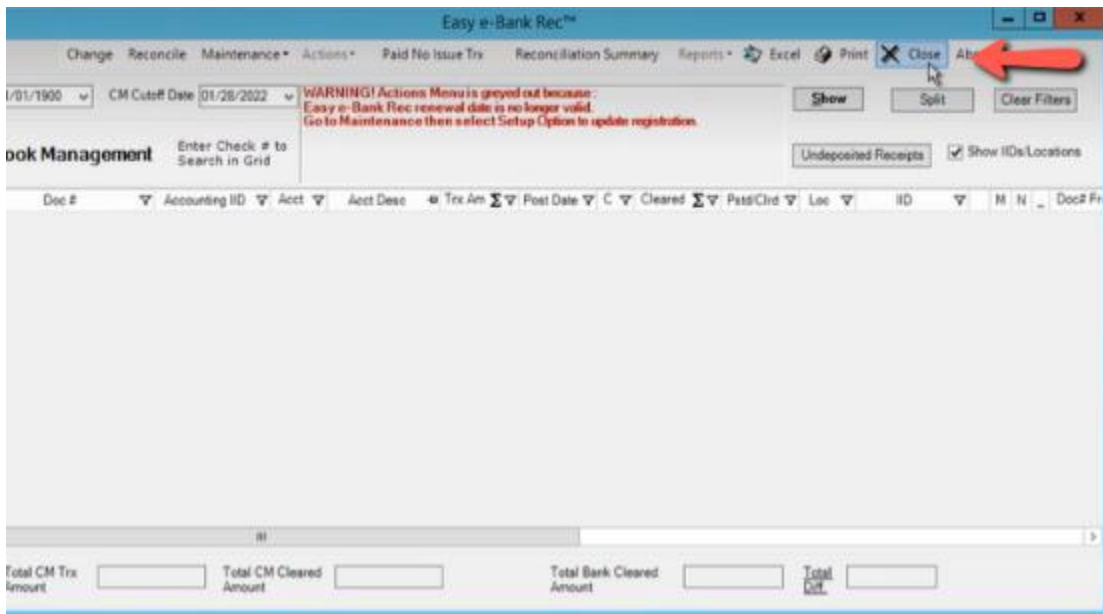
*Product Registration*

Click “Register.”

**NOTE:** It may take a few minutes to connect to our service; once complete the window will close.

Please close Easy e-Bank Rec and relaunch to confirm the registration is complete.

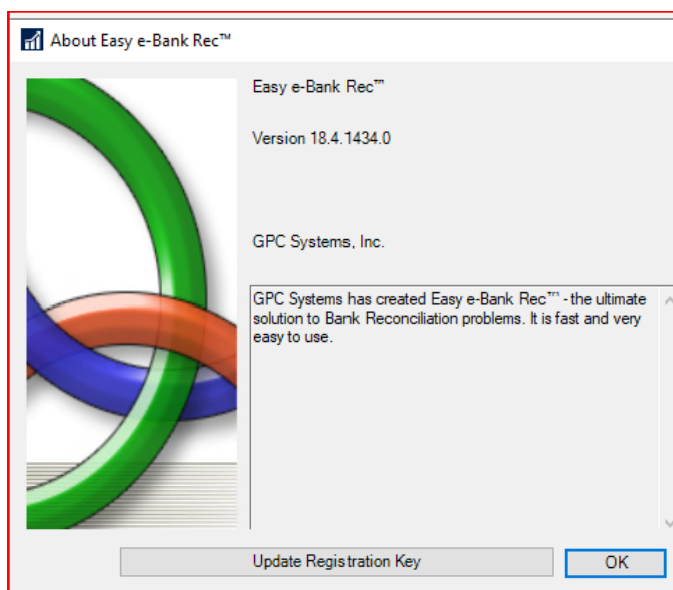
Click “X Close,” on the main screen tool bar to close Easy e-Bank Rec.



*Main Screen Tool Bar - Close Easy e-Bank Rec Application*

14. Relaunch / Open Easy e-Bank Rec.

15. Verify the version installed by navigating to Additional > Easy e-Bank Rec > About



*About Easy e-Bank Rec*

**NOTE:** If you have unresolved issues with your Site Name, take a screenshot of the Registration window with the **Site Name** and email it to [support@gpcsystems.com](mailto:support@gpcsystems.com) for verification. Our support team will verify the site name and contact you when the issue has been resolved.

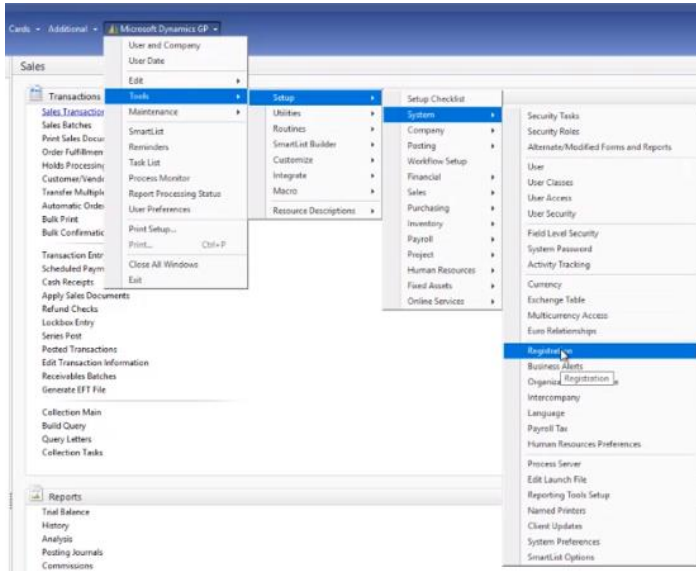
## How to find your Dynamics GP Site Name for Easy e-Bank Rec Registration Keys:

Easy e-Bank Rec is an “add-on” solution for Microsoft Dynamics GP. To use trial versions or ultimately license the software, we generate software license keys.

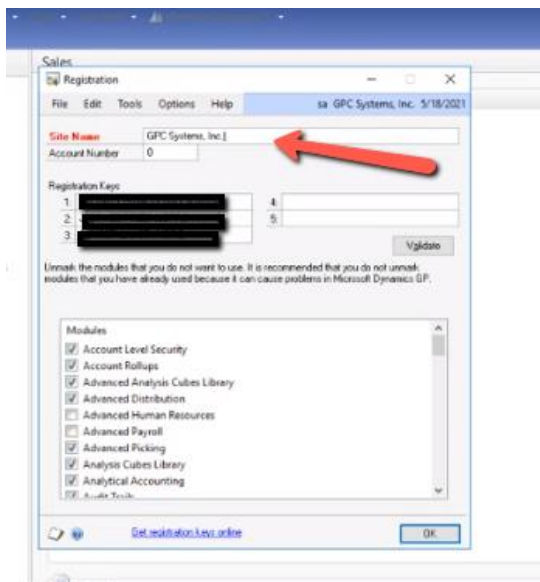
Like Dynamics GP license keys, **Easy e-Bank Rec keys are based on the “Site Name” that is entered in the Dynamics GP Registration window.**

There are 2 options to find your Site Name in Microsoft Dynamics GP:

Option 1: Go to the Microsoft Dynamics GP drop-down menu: Tools > Setup > System > Registration



*GP Registered Site Name Path*



*Registration Window w/Site Name*

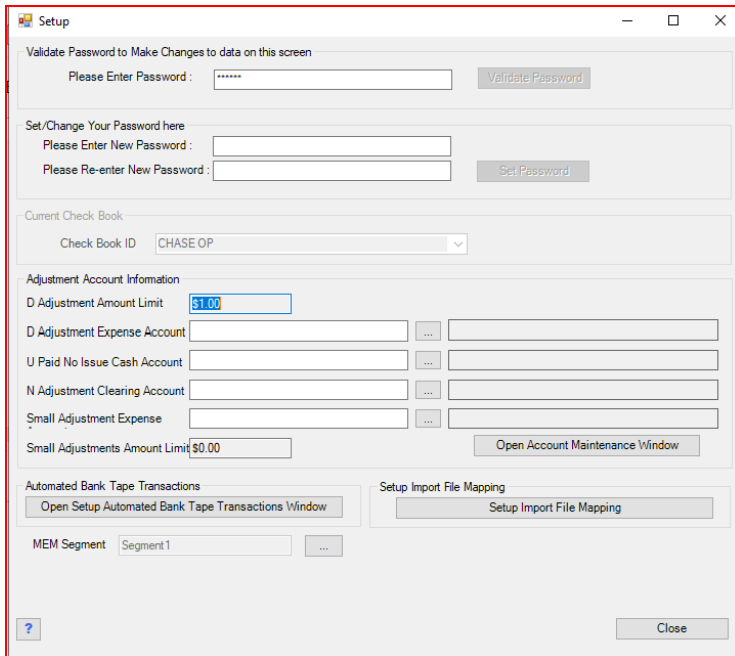
Option 2: Go to Administration > Setup > System > Registration

## Miscellaneous Note(s):

**NOTE:** If you have **MEM (Multi-Entity Management)**, by **Binary Stream**, it can now be enabled in Easy e-Bank Rec.

## How to enable MEM (Multi-Entity Management) by Binary Stream

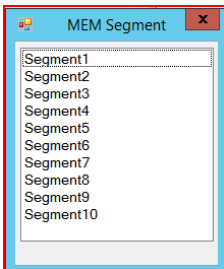
1. From the Easy e-Bank Rec Main Screen Tool Bar go to Maintenance > Setup Option  
The Setup window is displayed.



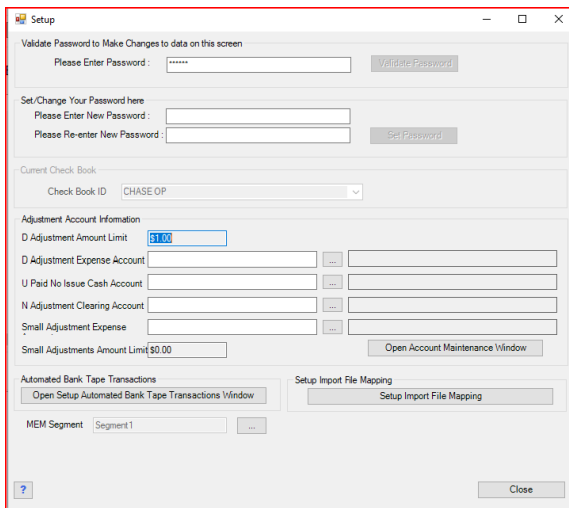
Setup Window

Click the “...” box adjacent to the MEM Segment field as shown above.

2. From the MEM Segment dropdown window, choose the segment used in MEM. (i.e., If your first GL segment is the MEM segment select “Segment1.”



MEM Segment Drop Down Window



Segment1 selected for MEM Segment